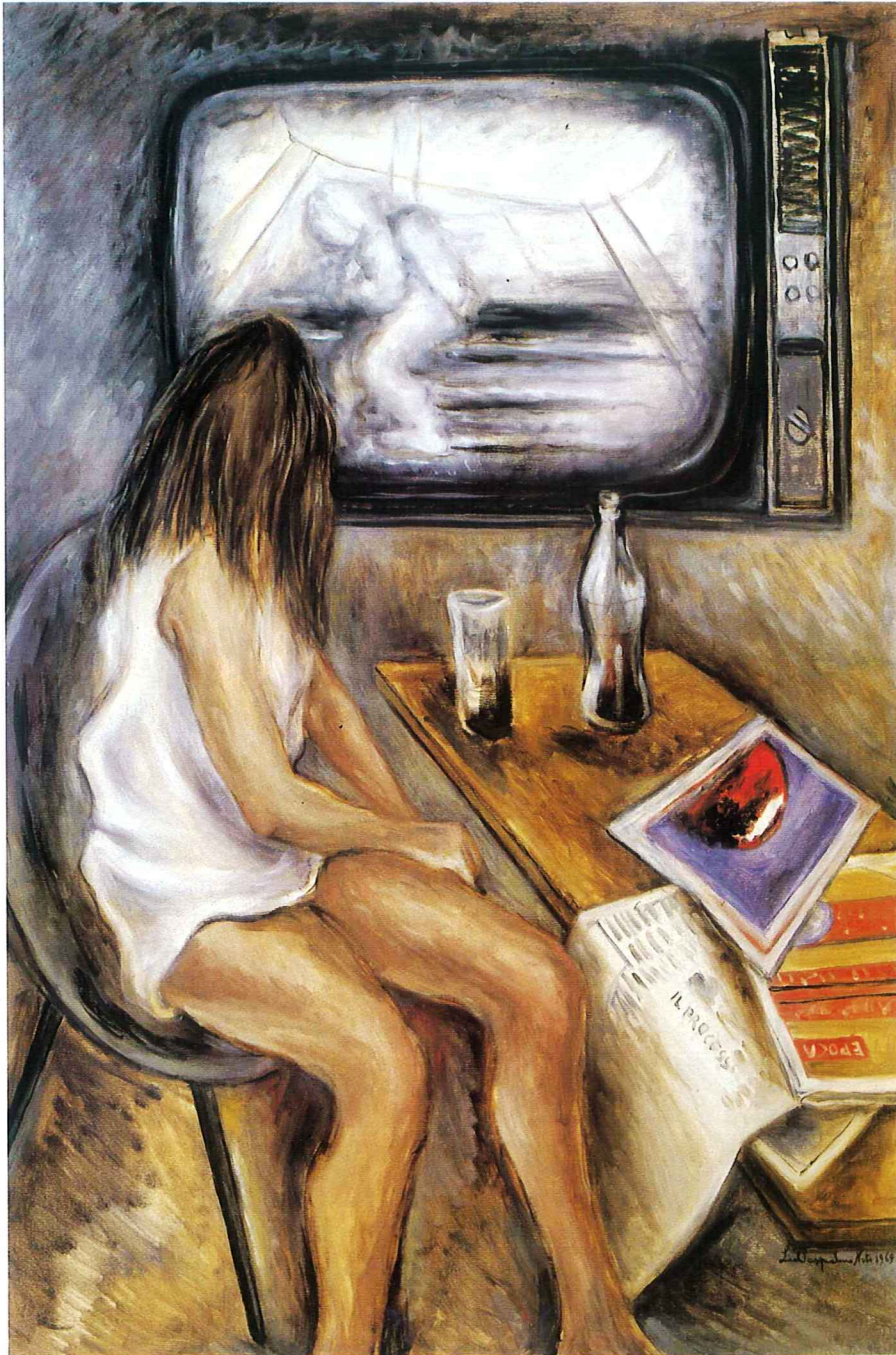


Lia Pasqualino Noto (Palermo 1909 -1998)

Apollo 11 (1970)

Olio su tela, 150 x 100



Giuseppe Migneco (Messina 1908 - Milano 1997)

Pescatori sulla spiaggia (1955 c.)

Olio su tela, 50 x 40



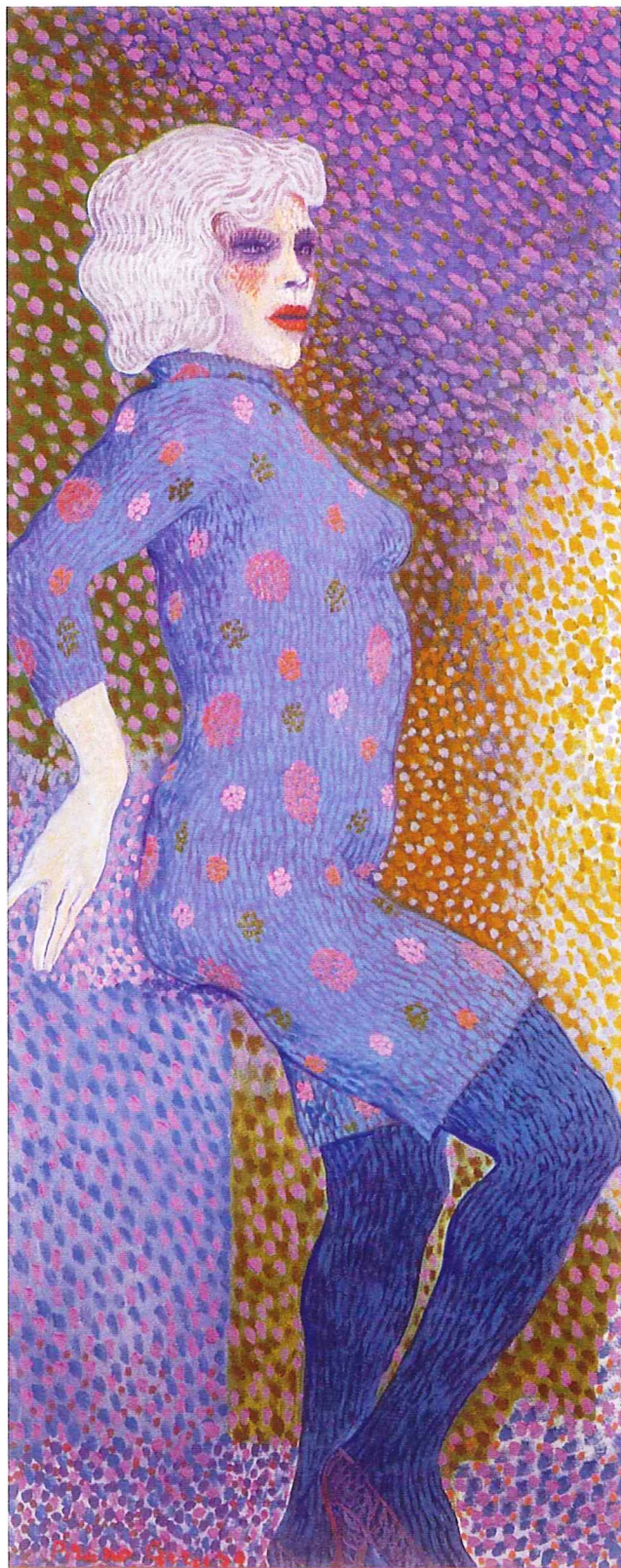
Aligi Sassu (Milano 1912)

Cavalli al guado (1961)

Olio su cartone, Ø 30



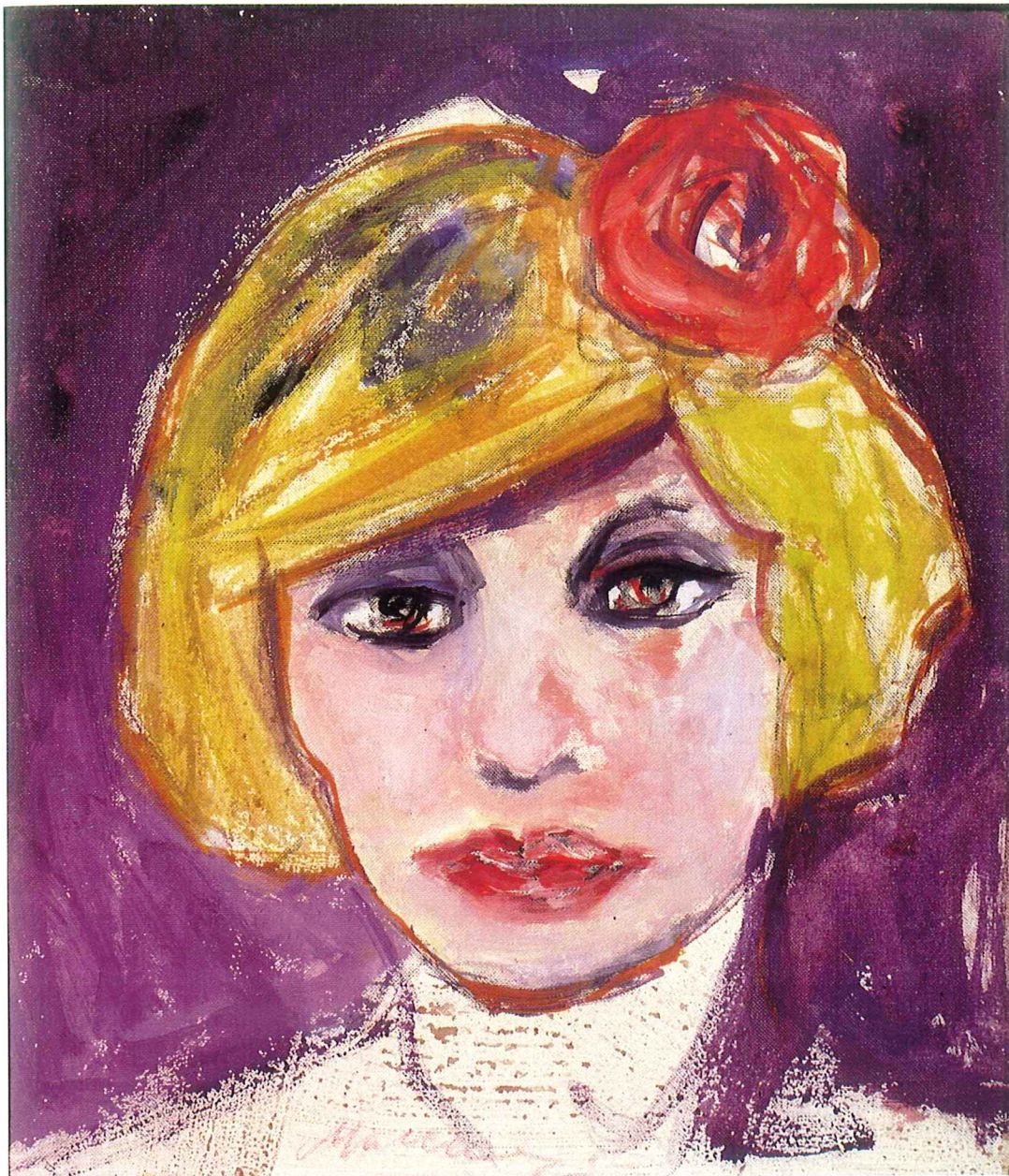
Bruno Caruso (Palermo 1927)
Figura di donna in piedi (1978)
Olio su tela, 120 x 50



Nino Maccari (Siena 1898 - Roma 1989)

Volto di donna (1970)

Olio su cartone telato, 40 x 35



Germana Parnykel (Kiev 1917 - Torre Pelice 1977)

L'ingegnere Parnykel (1955)

Olio su faesite, 83 x 65



Germana Parnykel (Kiev 1917 - Torre Pelice 1977)

Enzo e Nuzza Zerilli (1953)

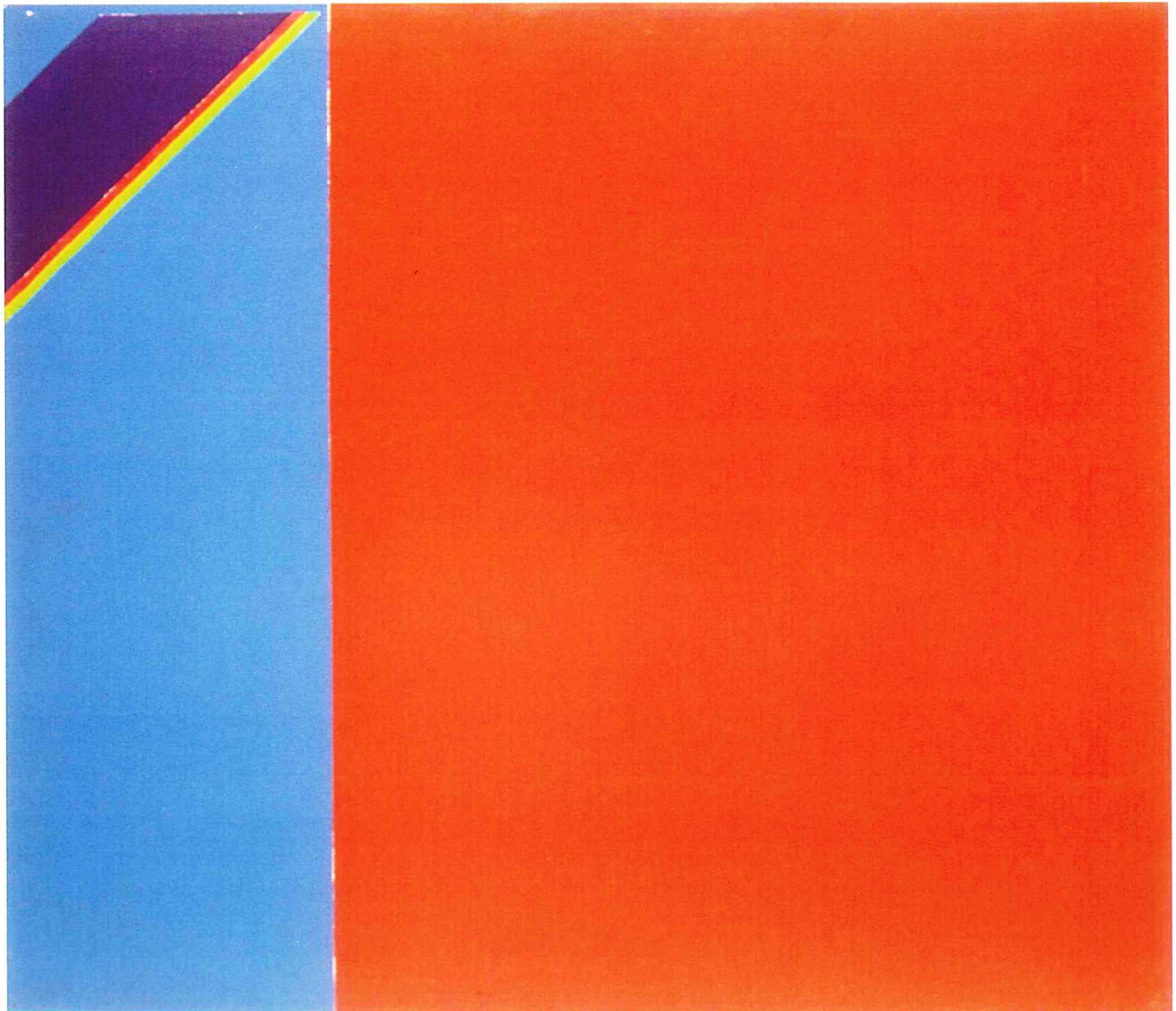
Olio su tela, 100 x 100



Hsiao Chin (Shanghai 1935)

Presenza (1974)

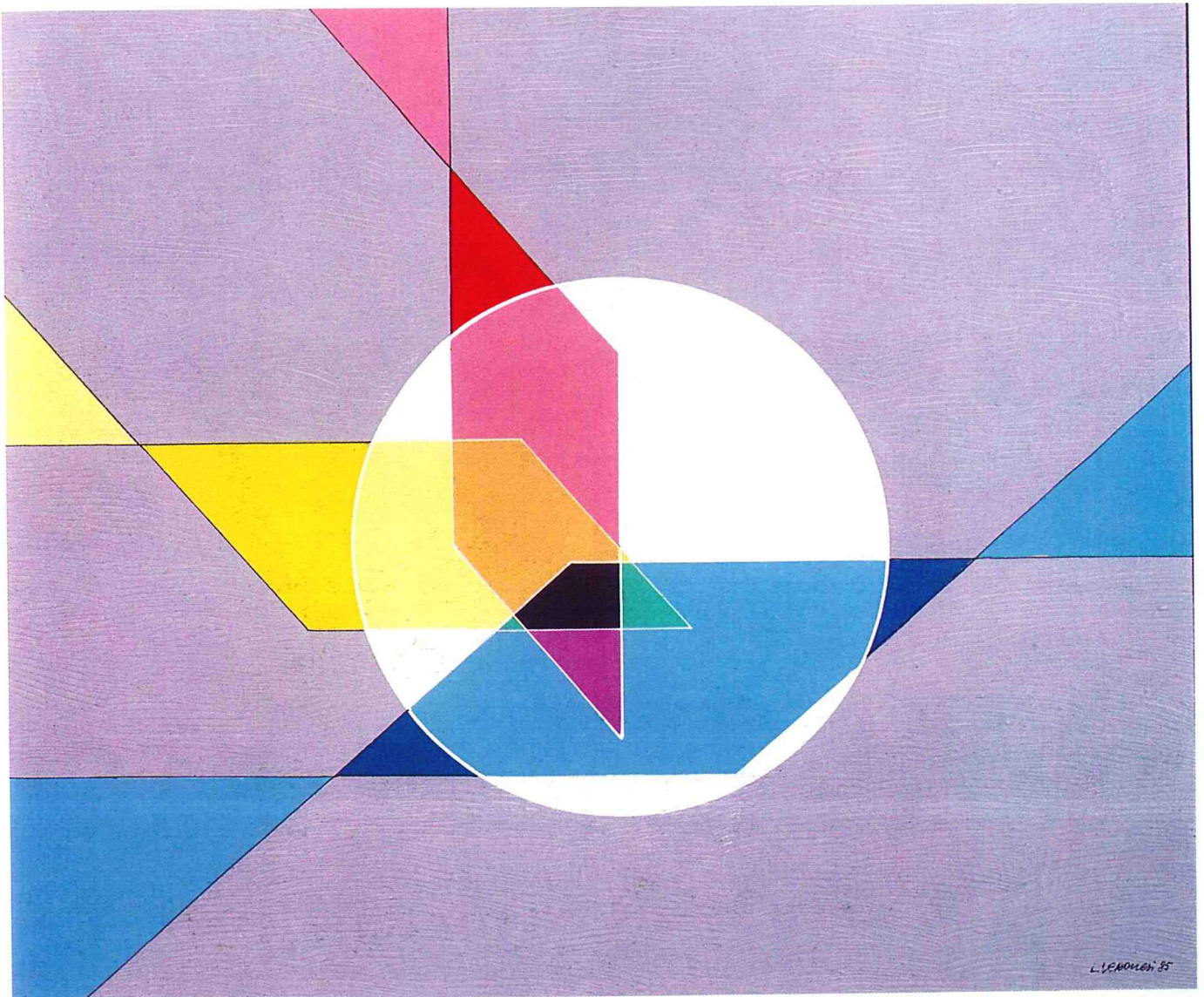
Tempera su tela, 70 x 80



Luigi Veronesi (Milano 1908)

Costruzione TH4 (1985)

Acrilico su tela, 50 x 60



L. VERONESI '85

Corrado Cagli (Ancona 1910 - Roma 1976)

Pale (1973)

Olio su tela, 200 x 150

